

# Workshop 6: Educating for Advanced Practice

Dr Catherine Duggan

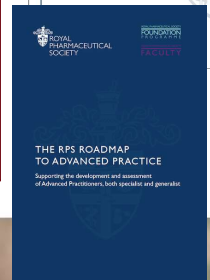
Education for advanced practice

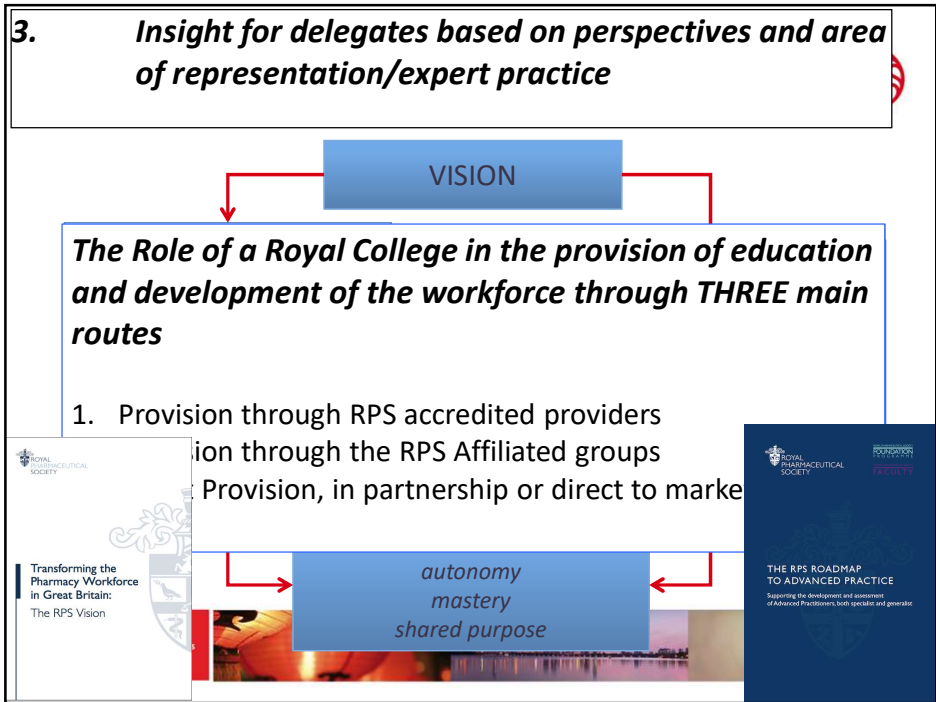
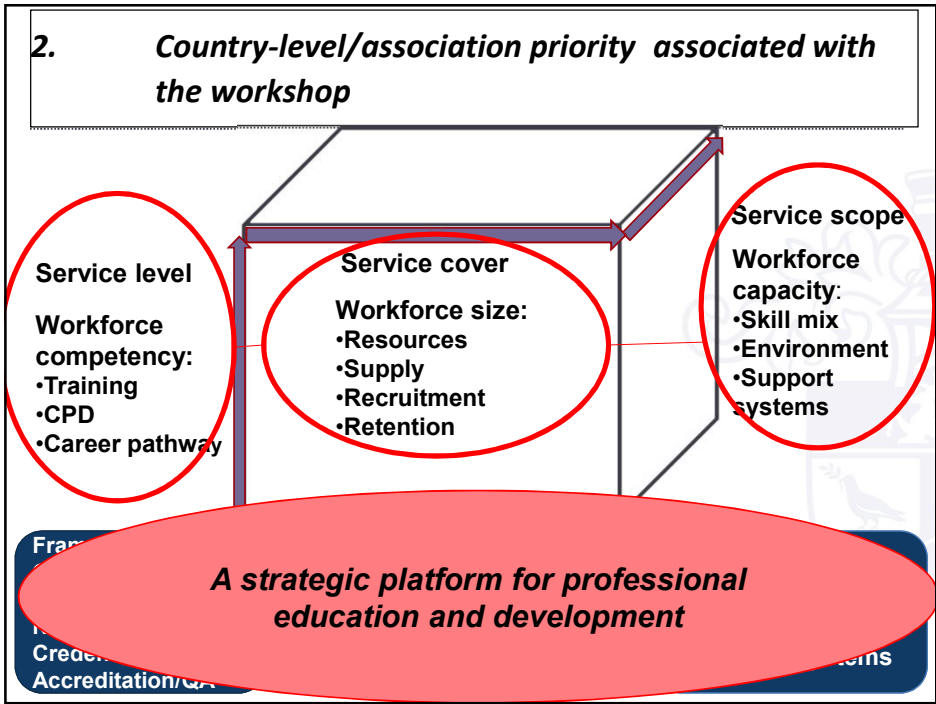
Royal Pharmaceutical Society, UK



## 1. *Principal challenge associated with workshop topic*

- I. We need a workforce that is *Flexible, Capable, Demonstrable, Adaptable*, able to move across sectors and adapt to changing care models
- II. Developing consensus that generalist skills, rather than specialist pathways provide a more holistic approach to patient care: same across all pharmaceutical disciplines.
- III. Education and development must be lifelong, accessible and adapt to meet workforce needs





# Workshop 6: Educating for Advanced Practice

Dr Catherine Duggan

Education for advanced practice

Royal Pharmaceutical Society, UK

